

**COMMUNITY FACILITIES DISTRICT NO. 2019-1  
(MEADOW RUN)  
CITY OF MENIFEE,  
COUNTY OF RIVERSIDE, STATE OF CALIFORNIA**

I HEREBY CERTIFY THAT THE WITHIN MAP SHOWING PROPOSED BOUNDARIES OF COMMUNITY FACILITIES DISTRICT NO. 2019-1 (MEADOW RUN), CITY OF MENIFEE, COUNTY OF RIVERSIDE, STATE OF CALIFORNIA, WAS APPROVED BY THE CITY COUNCIL OF THE CITY OF MENIFEE AT A REGULAR MEETING THEREOF, HELD ON \_\_\_\_ DAY OF \_\_\_\_, 20\_\_\_\_, BY RESOLUTION NO. \_\_\_\_\_

RECORDED THIS \_\_\_\_ DAY OF \_\_\_\_\_, 20\_\_\_\_ AT THE HOUR OF \_\_\_\_ O'CLOCK \_\_M IN BOOK \_\_\_\_ PAGE \_\_\_\_ OF MAPS OF ASSESSMENT AND COMMUNITY FACILITIES DISTRICTS IN THE OFFICE OF THE COUNTY RECORDER, IN THE COUNTY OF RIVERSIDE, STATE OF CALIFORNIA.

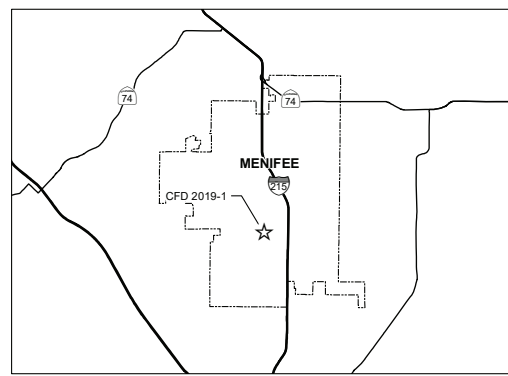
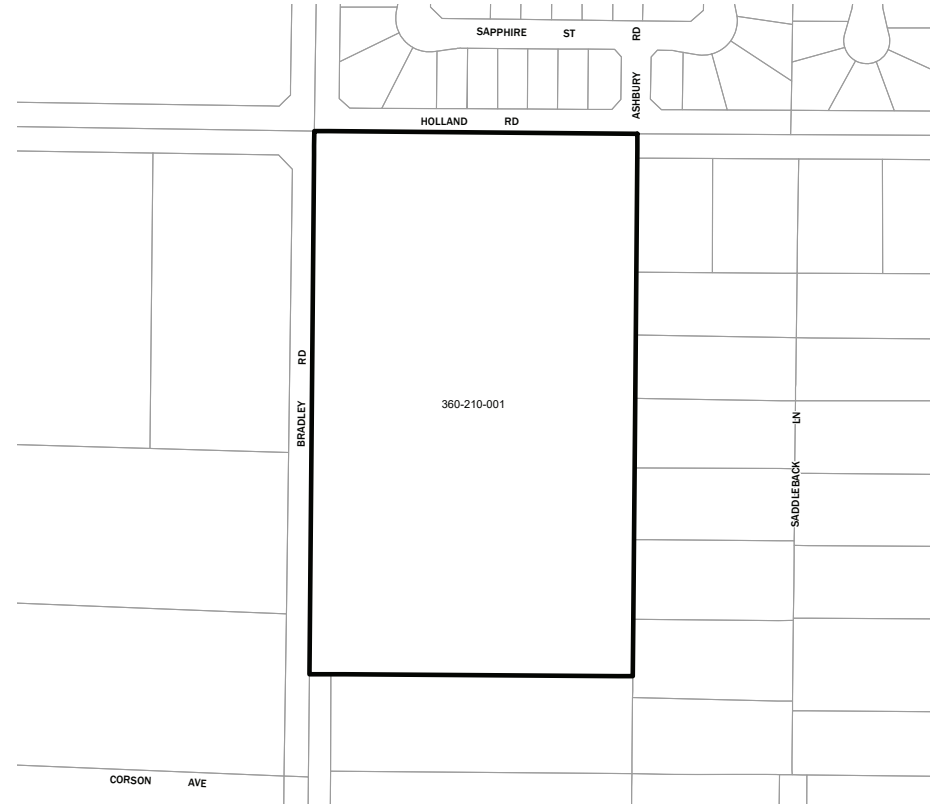
FEE: \_\_\_\_\_ NO.: \_\_\_\_\_  
PETER ALDANA, ASSESSOR, COUNTY CLERK, RECORDER




BY: \_\_\_\_\_  
DEPUTY

\_\_\_\_\_  
CITY CLERK  
CITY OF MENIFEE

FILED IN THE OFFICE OF THE CITY CLERK, CITY OF MENIFEE, THIS \_\_\_\_ DAY OF \_\_\_\_, 20\_\_\_\_.

\_\_\_\_\_  
CITY CLERK  
CITY OF MENIFEE



- LEGEND**
-  CFD BOUNDARY
  -  PARCEL LINE
  -  XXX-XXX-XXX ASSESSOR PARCEL NUMBER



THIS BOUNDARY MAP CORRECTLY SHOWS THE BOUNDARIES OF THE COMMUNITY FACILITIES DISTRICT. FOR DETAILS CONCERNING THE LINES AND DIMENSIONS OF LOTS OR PARCEL REFER TO THE COUNTY ASSESSOR'S MAPS FOR FISCAL YEAR 2019-20.

