



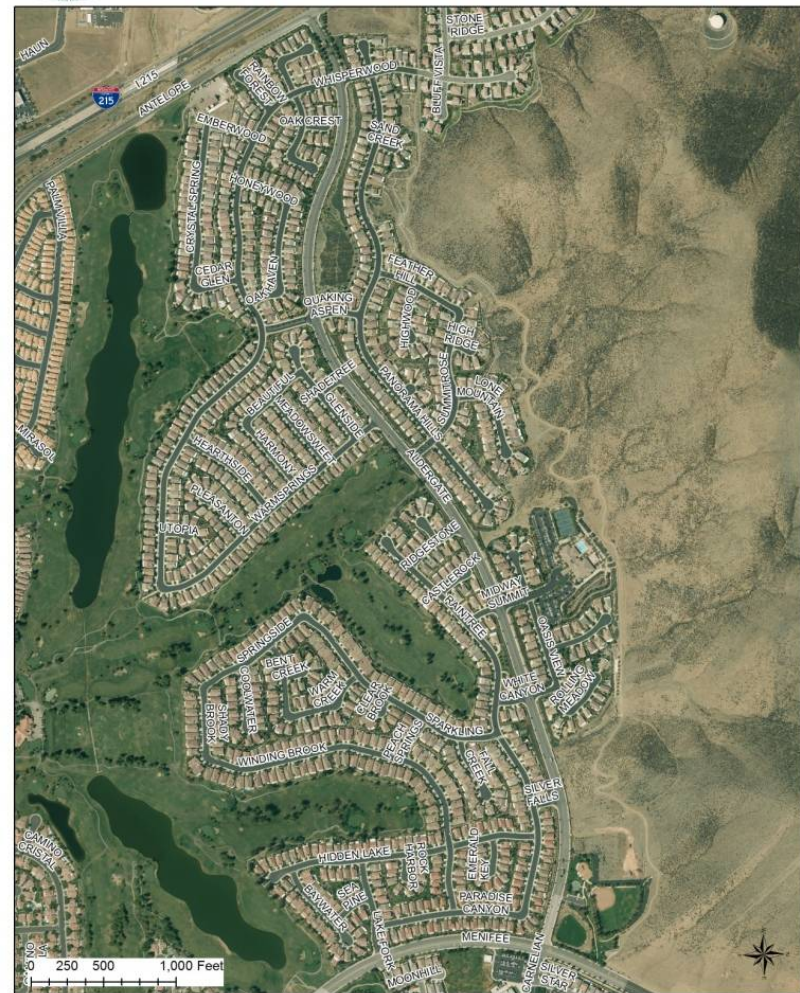
Water Use Efficiency for The Oasis Community Association

Elizabeth Lovsted, P.E.

January 10, 2019

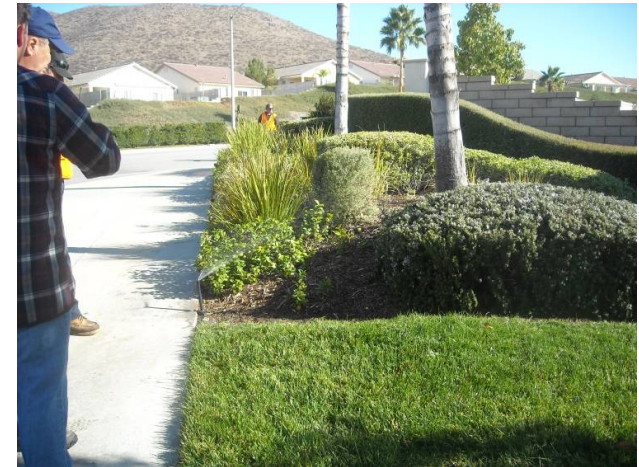
Overview of Oasis Community Association

- 1,158 homes
- Located in the City of Menifee
- Community front yards served by 19 water meters
- 146 AF total of potable landscape water use in 2018



Participation in Efficiency Programs

- 500,000 SF converted to recycled water
 - Design, plan check and inspection
 - Five potable water meters removed
 - Three recycled water meters installed
 - Additional conversions of front yards not recommended at this time.
- 54,000 SF of turf replaced
- 21,444 rotating sprinkler nozzles and 24 weather-based irrigation controllers installed
- Community presentations



Landscape Measurement

- 2 Million SF currently used to calculate water budgets
 - Includes area converted to recycled
- EMWD staff recently verified area at 1.5 Million SF
 - Used 2018 aerial imagery
- Oasis has measured some areas onsite and calculated different square footage
- EMWD is coordinating with Oasis and a contractor to verify all landscape areas onsite in January



Landscape Irrigation Estimate

Customer Name: The Oasis Community Association
Meter #: 66000400

Service Address: 0 LAKE FORK DR
MENEFEE 92584 - Acct #: 210489-02

Instructions: Please highlight, the area on the map the meter listed irrigates.
Please return to EMWD Conservation Department via email to Conservation@emwd.org or mail to PO Box 8300 Perris, CA 92572. Attention: Conservation Dept. Thank you for your assistance!

Legend

	Functional Turf	0 SF
	Non-Functional Turf	49,573 SF
	Other Landscape Areas	57,609 SF

130 65 0 130 260 390 Feet

1:3,000

Map printed 8/29/2018



Future Opportunity: Water Management Pilot Project

- Select five landscape accounts with historically high water use
- Identify any existing irrigation problems for repair by Oasis
- Train Oasis landscape managers to operate weather-based Calsense controllers
- Monitor water use over an irrigation season (March-October)
- Waive any Tier 3 or 4 rates for accounts in the pilot project if water use efficient practices are followed





Contact Information

Elizabeth Lovsted, P.E.
Director of Water Supply Planning and Conservation
(951) 928-3777 Ext. 4307

Email: lovstede@emwd.org

